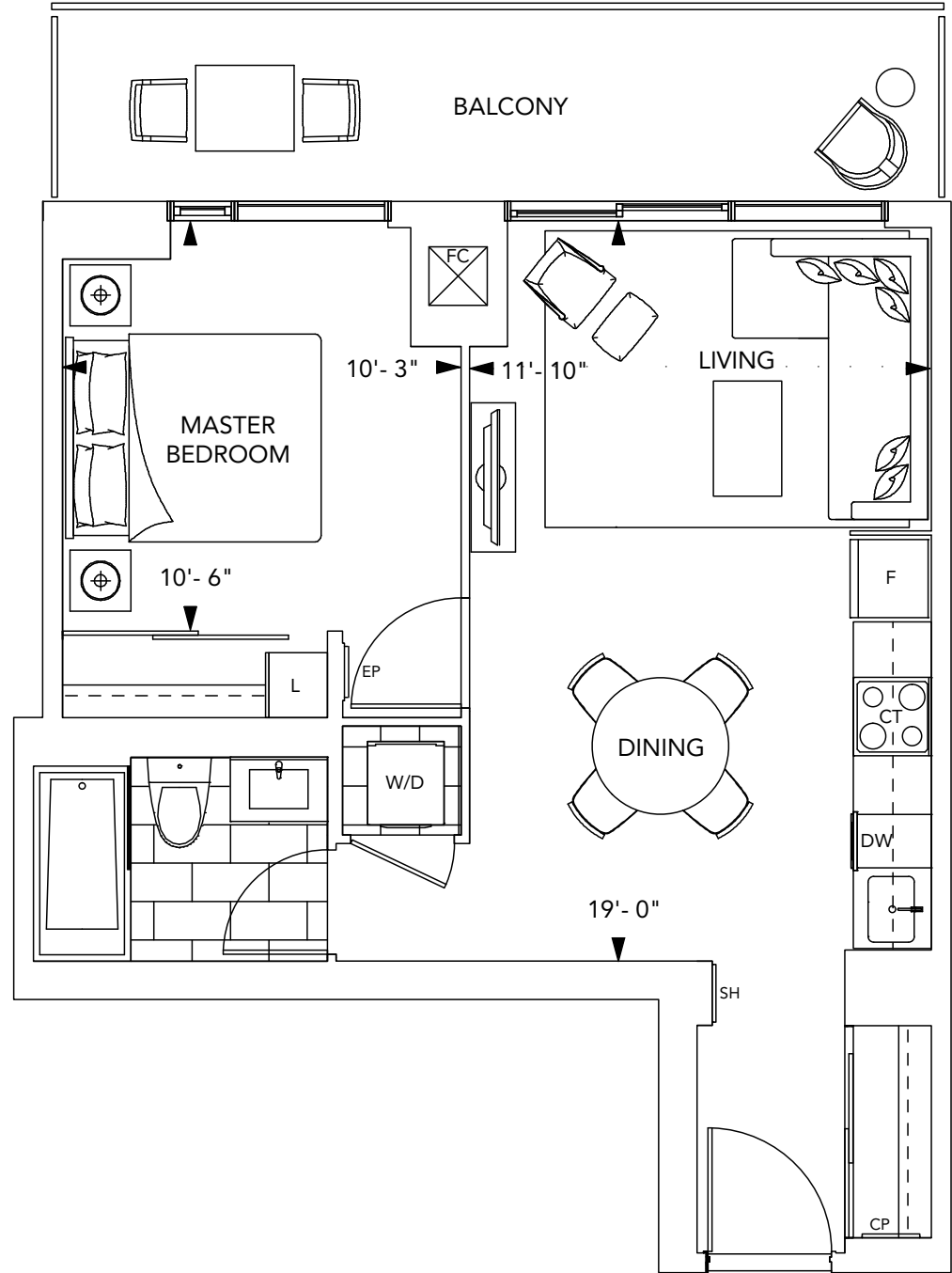
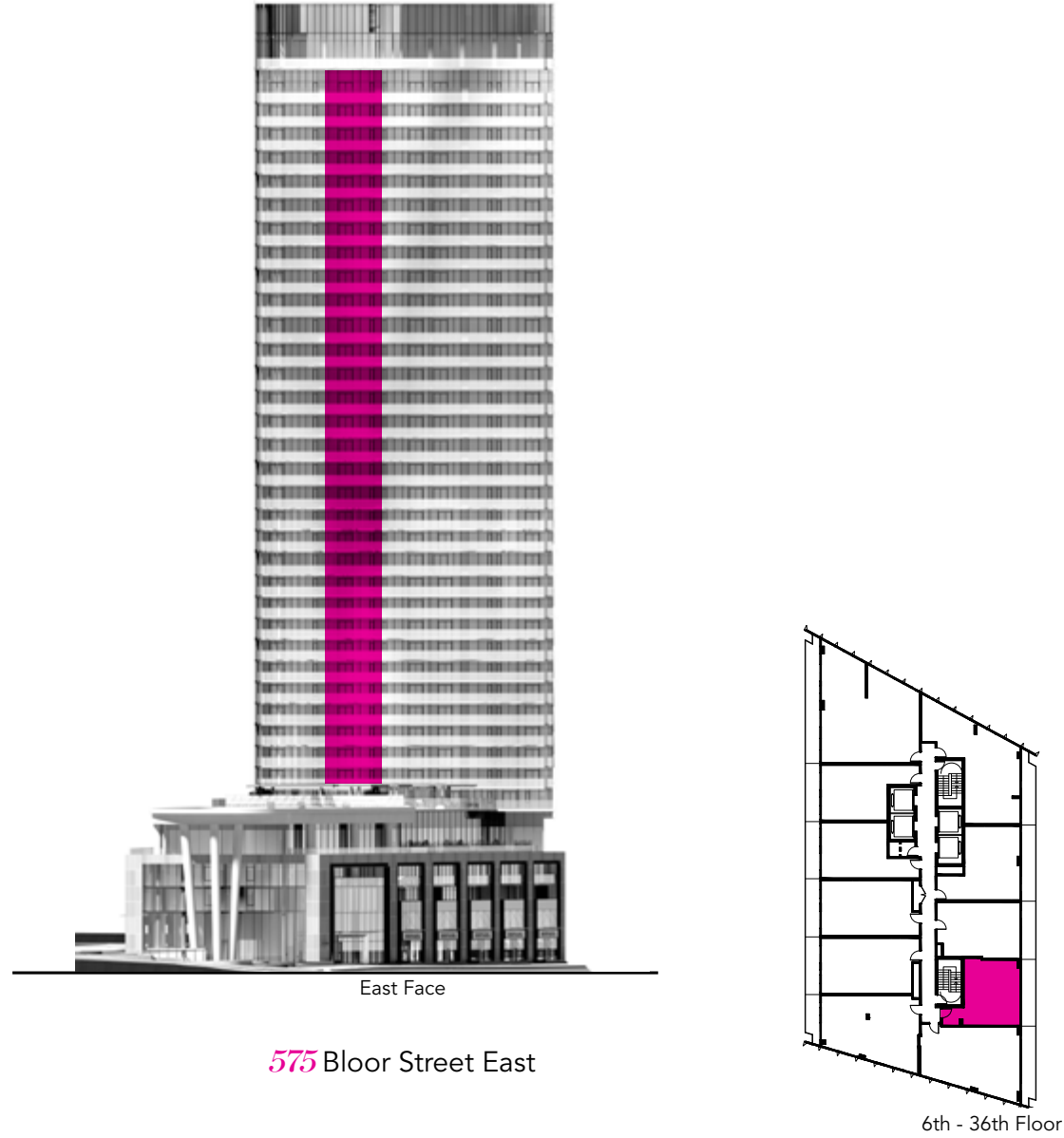


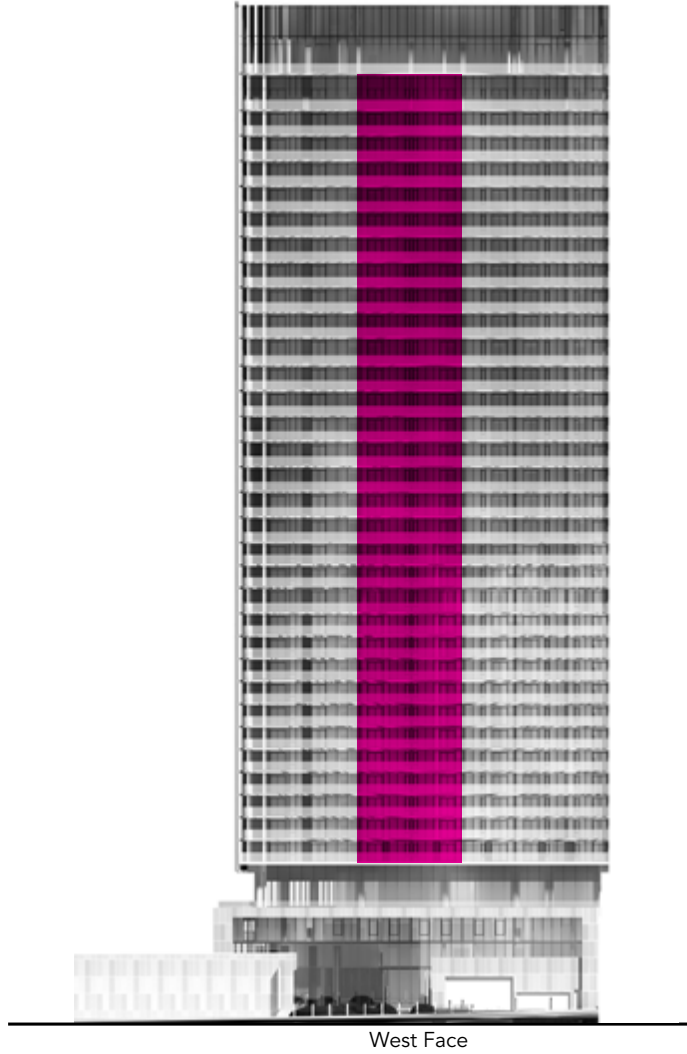
Suite 1A

1 Bedroom •

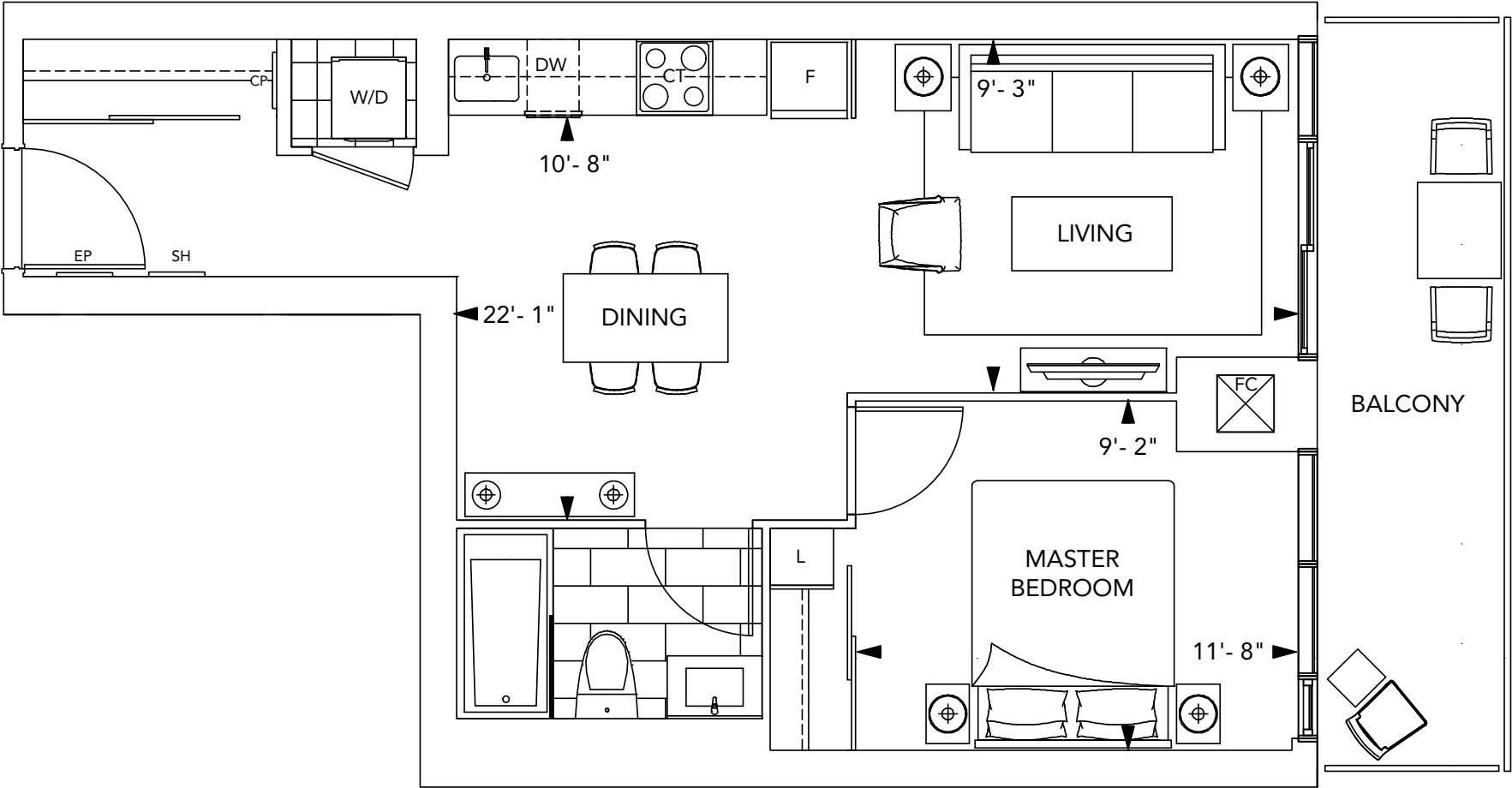
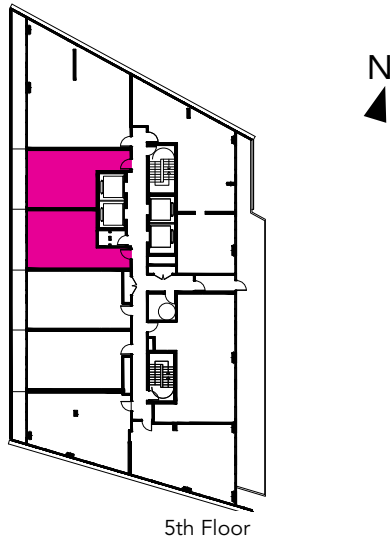
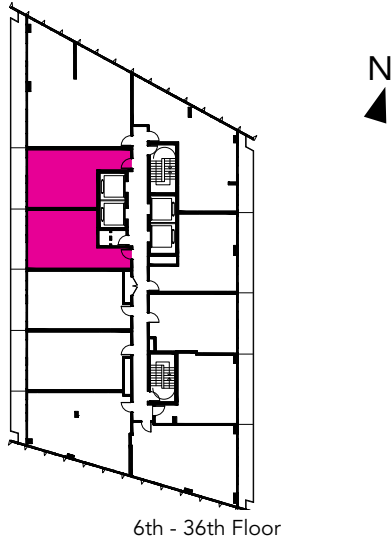


All dimensions are approximate and subject to normal construction variances. Dimensions may exceed the useable floor area. Sizes and specifications subject to change without notice. Furniture is displayed for illustration purposes only and does not necessarily reflect the electrical plan for the suite. Suites are sold unfurnished. E.&O.E. ©Tridel 2016. ©Tridel, "D" design, Tridel Built for Life, Tridel Built for Life Design, and Built Green. Built for Life are registered Trademarks of Tridel Corporation. Project names and logos are Trademarks of their respective owners. All rights reserved. E.&O.E. January 2017.

Suite 1B / 1BR
1 Bedroom



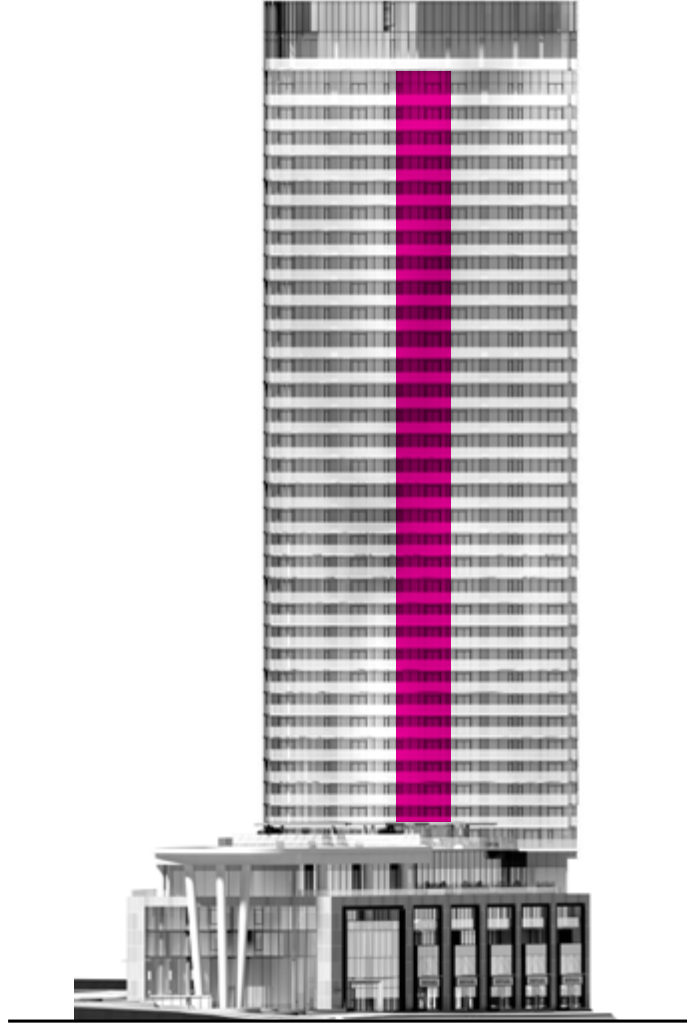
575 Bloor Street East



All dimensions are approximate and subject to normal construction variances. Dimensions may exceed the useable floor area. Sizes and specifications subject to change without notice. Furniture is displayed for illustration purposes only and does not necessarily reflect the electrical plan for the suite. Suites are sold unfurnished. E.&O.E. ©Tridel 2016. ©Tridel, "D" design, Tridel Built for Life, Tridel Built for Life Design, and Built Green. Built for Life are registered Trademarks of Tridel Corporation. Project names and logos are Trademarks of their respective owners. All rights reserved. E.&O.E. January 2017.

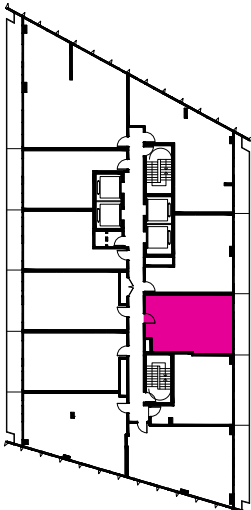
Suite 1C+D

1 Bedroom + Den

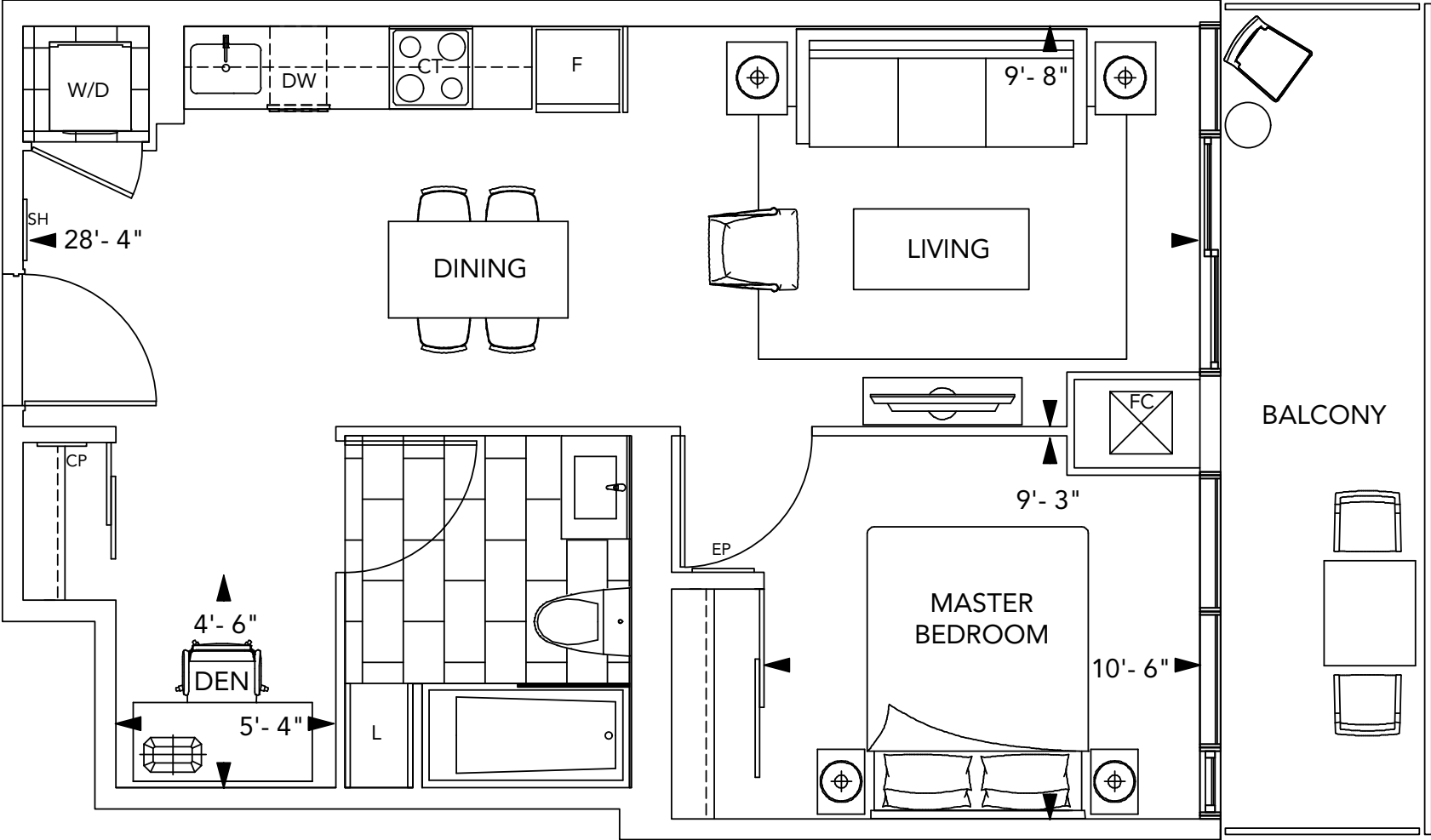


East Face

575 Bloor Street East



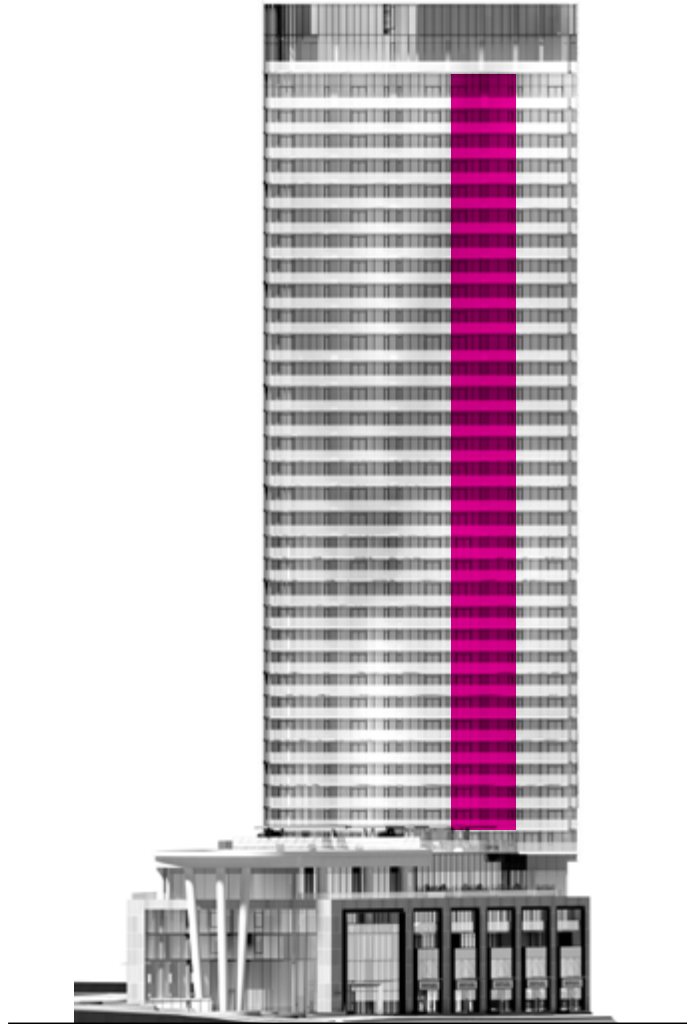
6th - 36th Floor



All dimensions are approximate and subject to normal construction variances. Dimensions may exceed the useable floor area. Sizes and specifications subject to change without notice. Furniture is displayed for illustration purposes only and does not necessarily reflect the electrical plan for the suite. Suites are sold unfurnished. E.&O.E. ©Tridel 2016. ©Tridel, "D" design, Tridel Built for Life, Tridel Built for Life Design, and Built Green. Built for Life are registered Trademarks of Tridel Corporation. Project names and logos are Trademarks of their respective owners. All rights reserved. E.&O.E. January 2017.

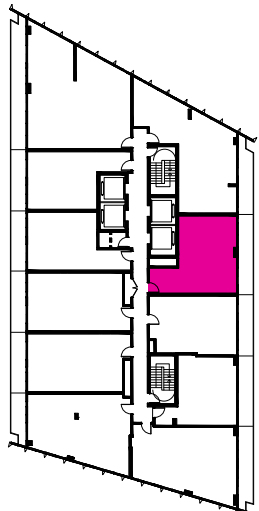
Suite 1D+D

1 Bedroom + Den

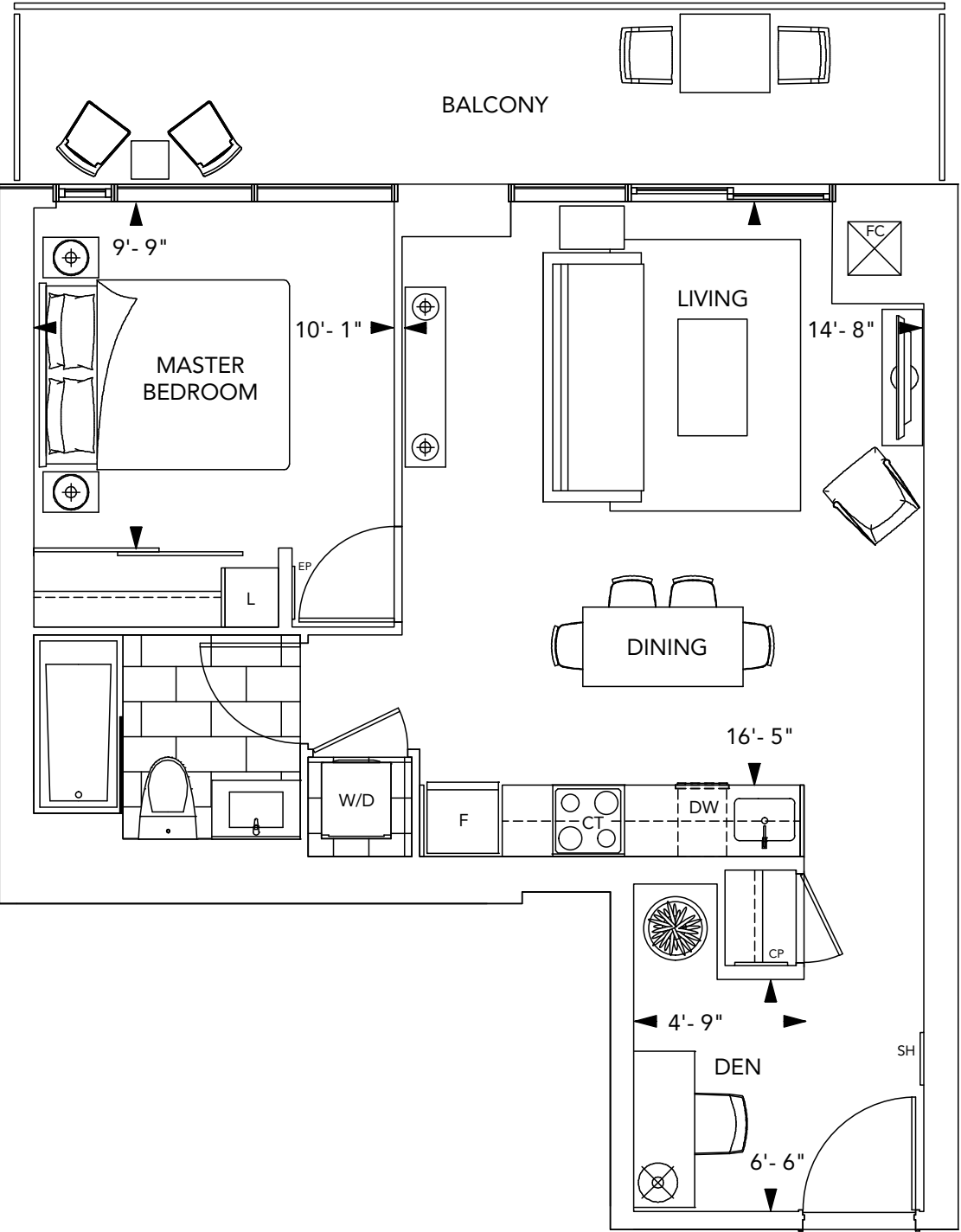


East Face

575 Bloor Street East

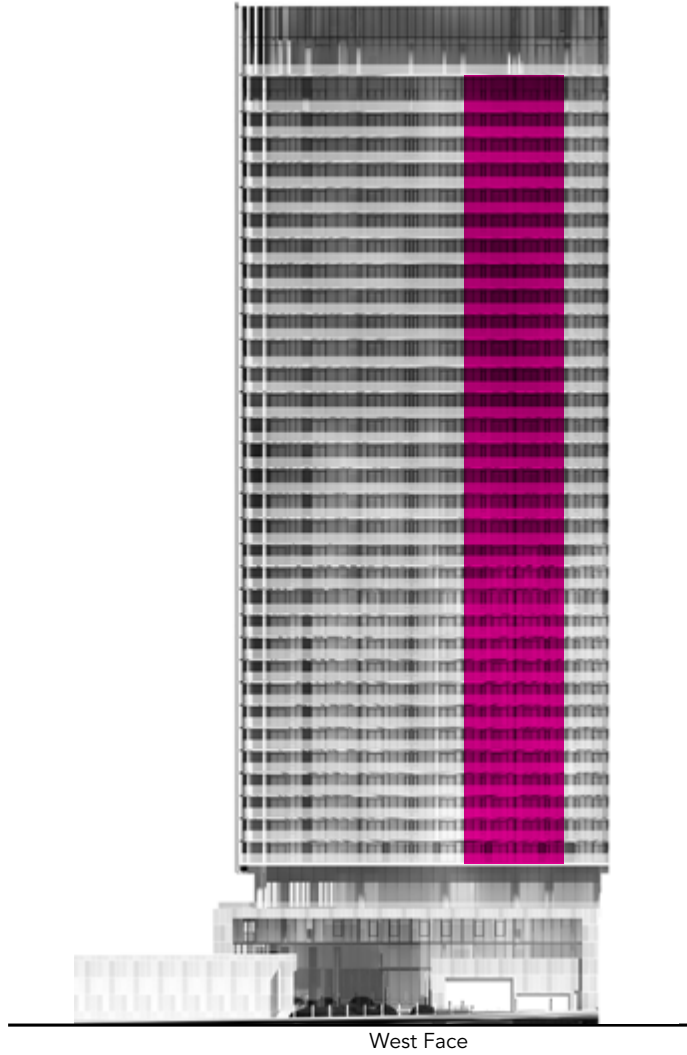


6th - 36th Floor

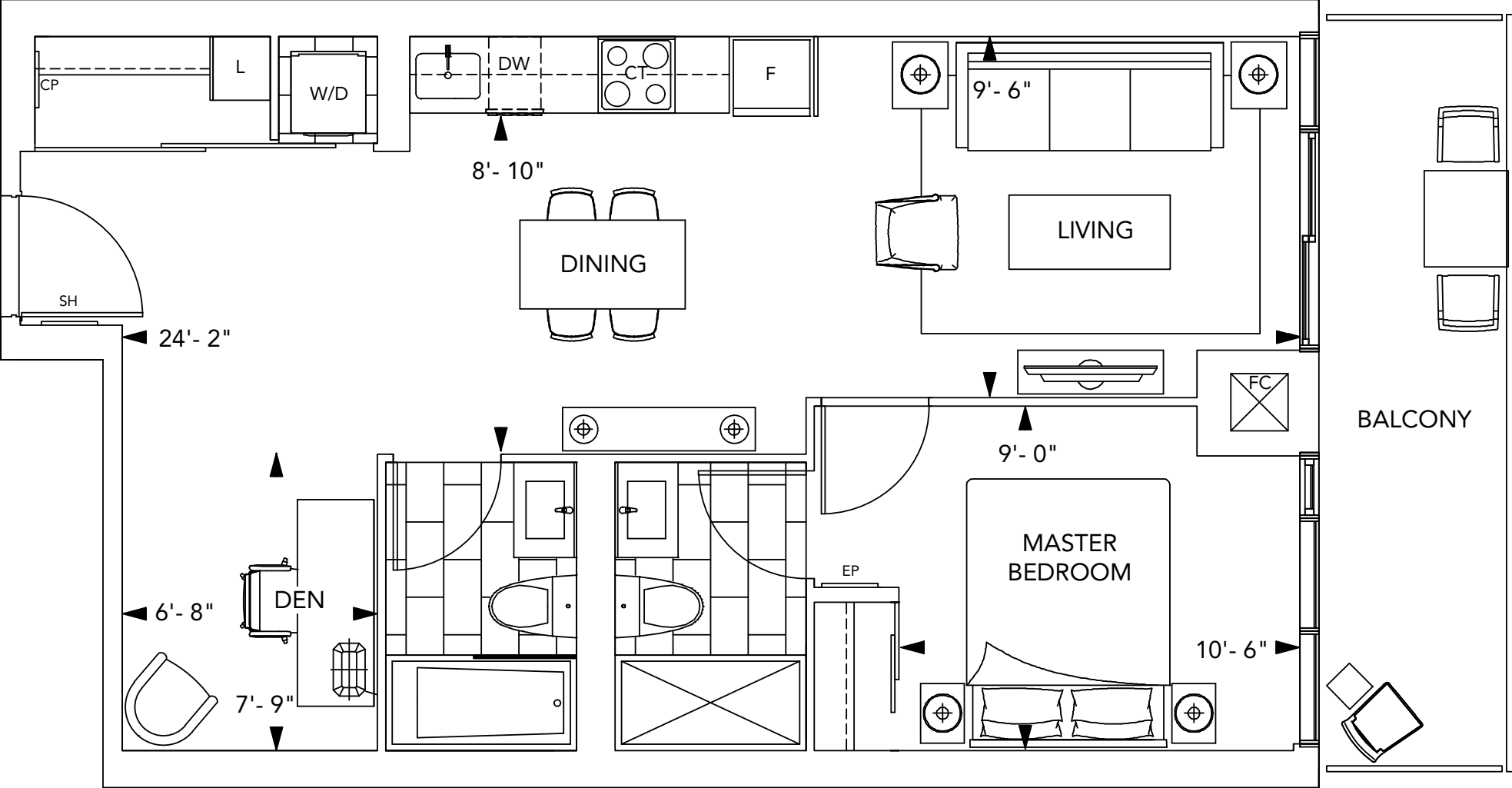
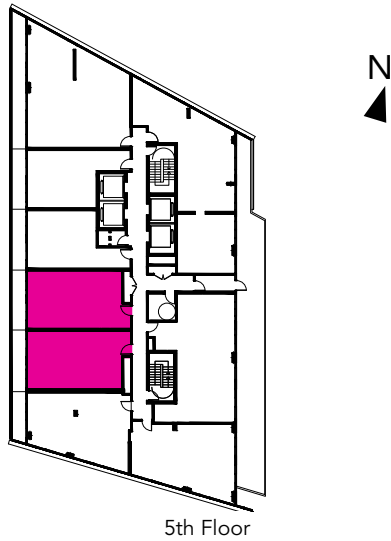
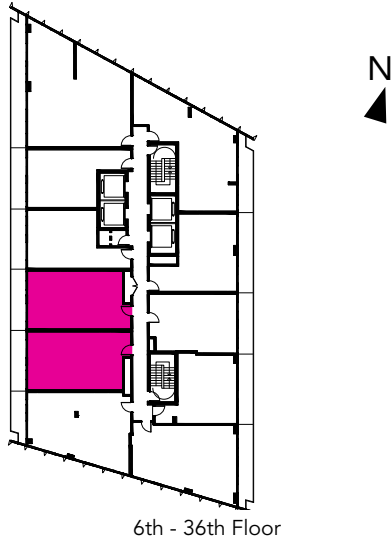


All dimensions are approximate and subject to normal construction variances. Dimensions may exceed the useable floor area. Sizes and specifications subject to change without notice. Furniture is displayed for illustration purposes only and does not necessarily reflect the electrical plan for the suite. Suites are sold unfurnished. E.&O.E. ©Tridel 2016. ©Tridel, "D" design, Tridel Built for Life, Tridel Built for Life Design, and Built Green. Built for Life are registered Trademarks of Tridel Corporation. Project names and logos are Trademarks of their respective owners. All rights reserved. E.&O.E. January 2017.

Suite 1E+D / 1E+DR
1 Bedroom + Den



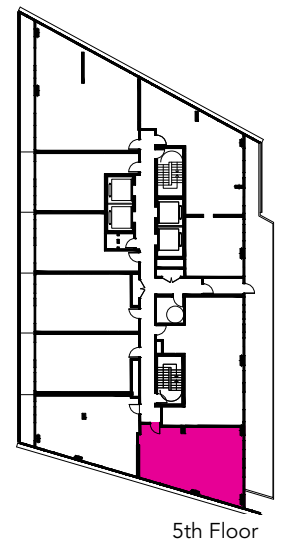
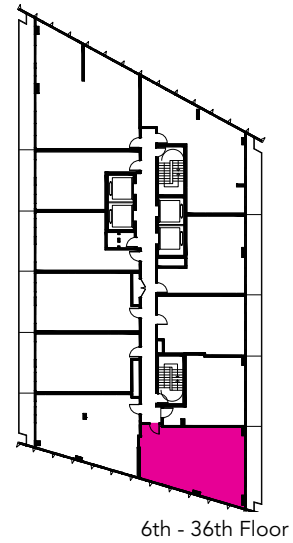
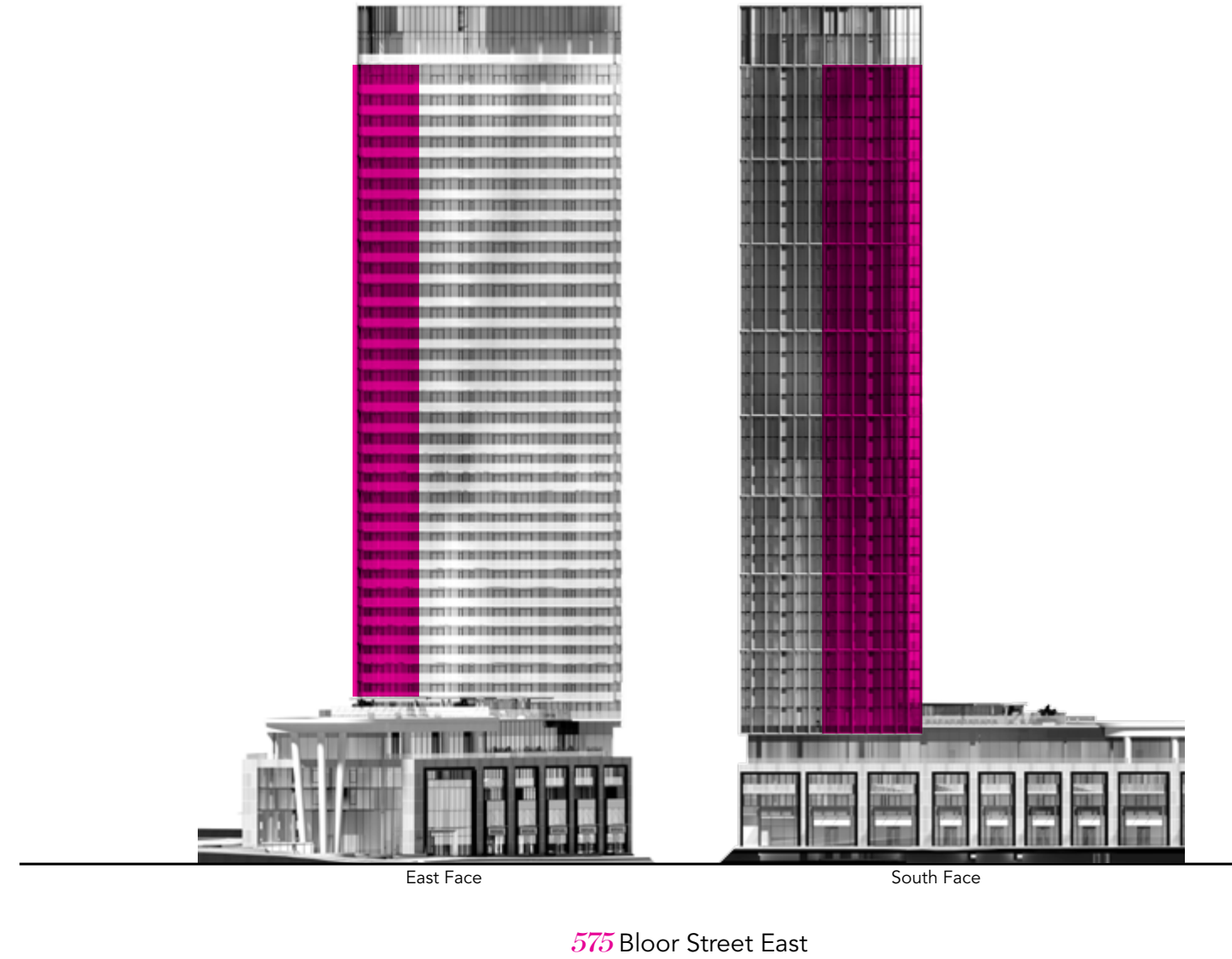
575 Bloor Street East



All dimensions are approximate and subject to normal construction variances. Dimensions may exceed the useable floor area. Sizes and specifications subject to change without notice. Furniture is displayed for illustration purposes only and does not necessarily reflect the electrical plan for the suite. Suites are sold unfurnished. E.&O.E. ©Tridel 2016. ©Tridel, "D" design, Tridel Built for Life, Tridel Built for Life Design, and Built Green. Built for Life are registered Trademarks of Tridel Corporation. Project names and logos are Trademarks of their respective owners. All rights reserved. E.&O.E. January 2017.

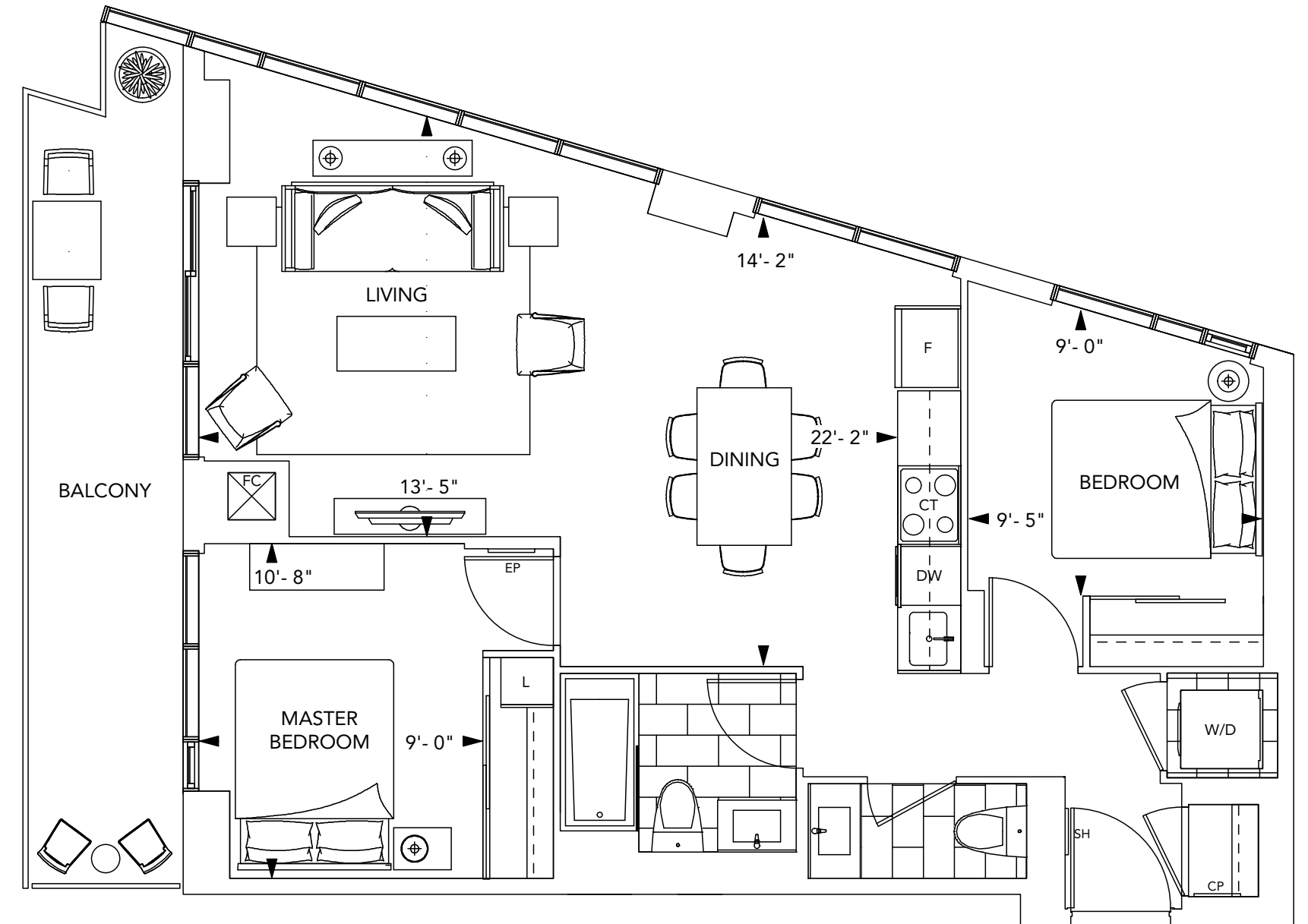
Suite 2A

2 Bedroom



N

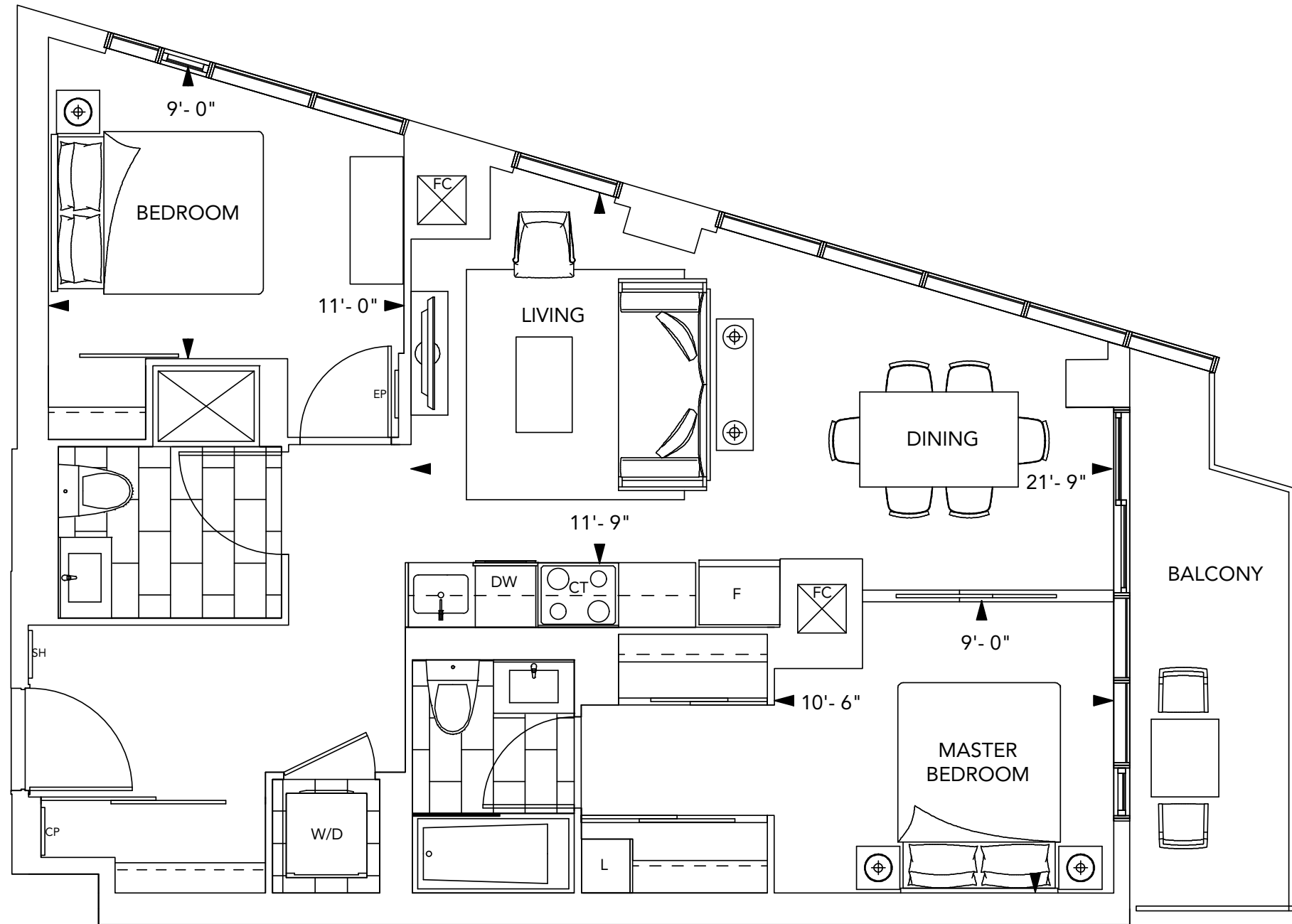
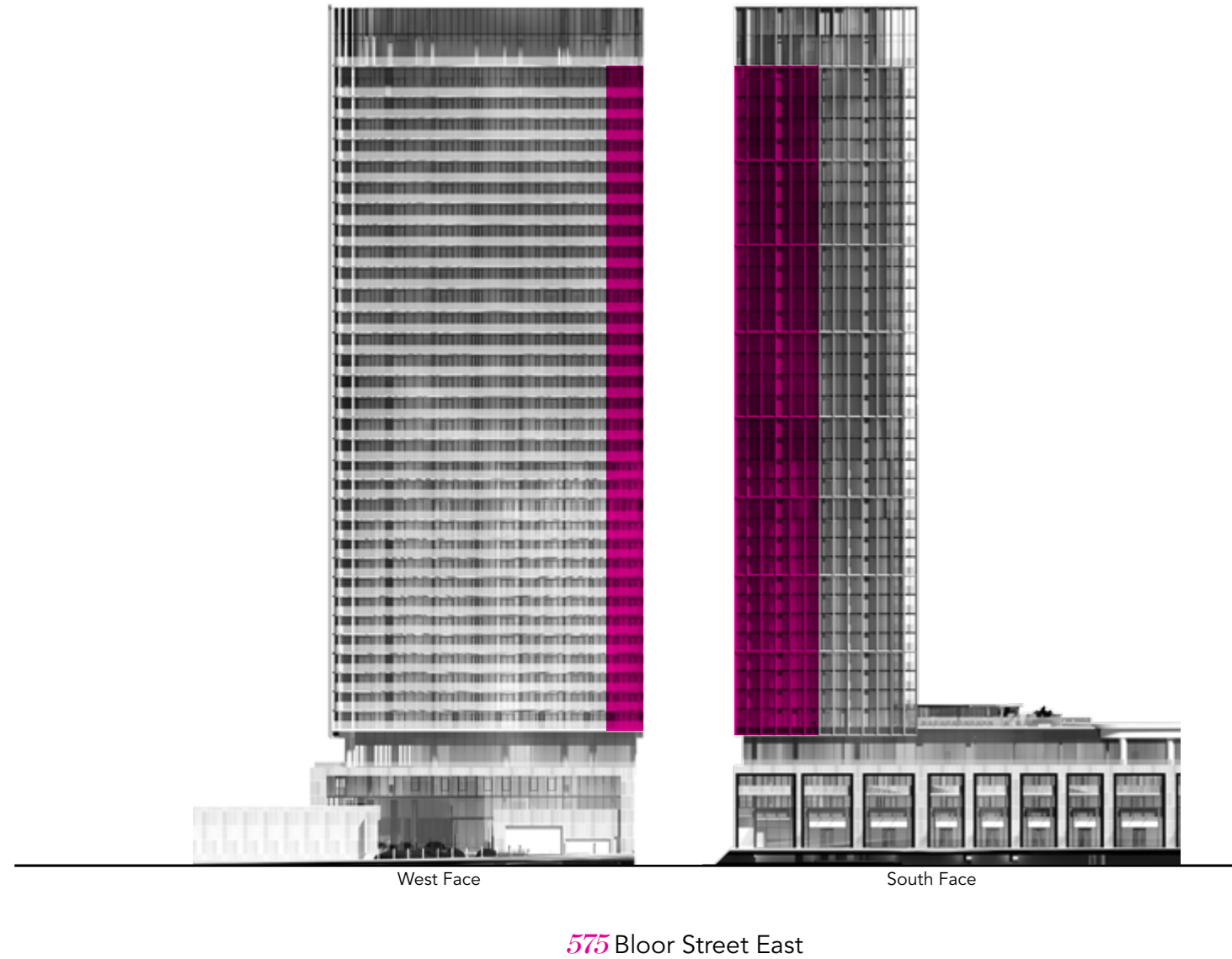
N



All dimensions are approximate and subject to normal construction variances. Dimensions may exceed the useable floor area. Sizes and specifications subject to change without notice. Furniture is displayed for illustration purposes only and does not necessarily reflect the electrical plan for the suite. Suites are sold unfurnished. E.&O.E. ©Tridel 2016. ©Tridel, "D" design, Tridel Built for Life, Tridel Built for Life Design, and Built Green. Built for Life are registered Trademarks of Tridel Corporation. Project names and logos are Trademarks of their respective owners. All rights reserved. E.&O.E. January 2017.

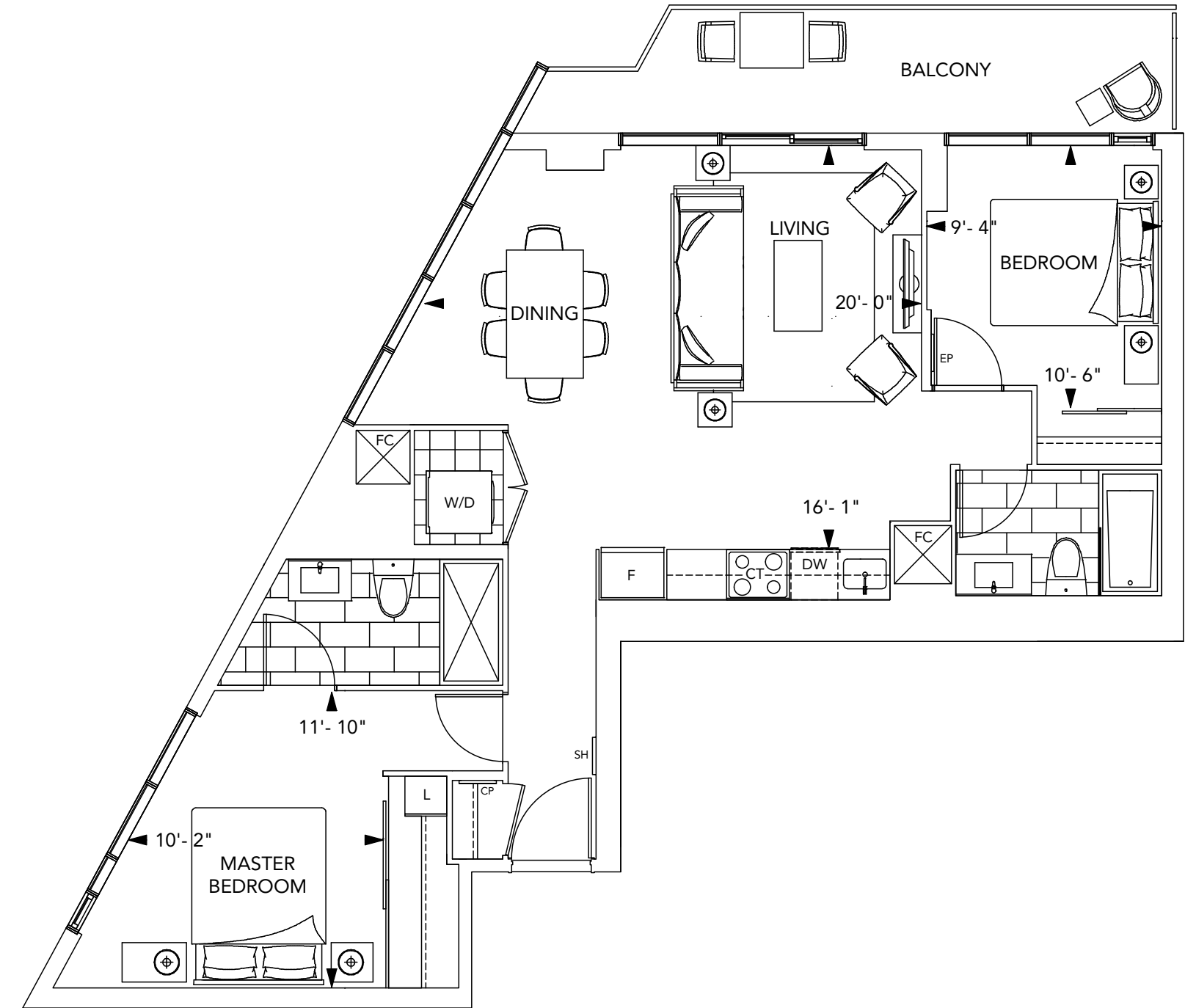
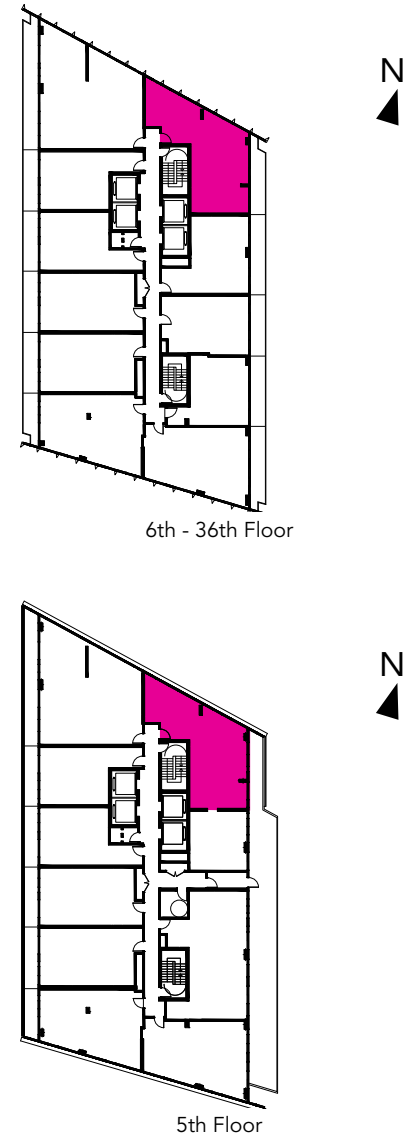
Suite 2B

2 Bedroom •



All dimensions are approximate and subject to normal construction variances. Dimensions may exceed the useable floor area. Sizes and specifications subject to change without notice. Furniture is displayed for illustration purposes only and does not necessarily reflect the electrical plan for the suite. Suites are sold unfurnished. E.&O.E. ©Tridel 2016. ©Tridel, "D" design, Tridel Built for Life, Tridel Built for Life Design, and Built Green. Built for Life are registered Trademarks of Tridel Corporation. Project names and logos are Trademarks of their respective owners. All rights reserved. E.&O.E. January 2017.

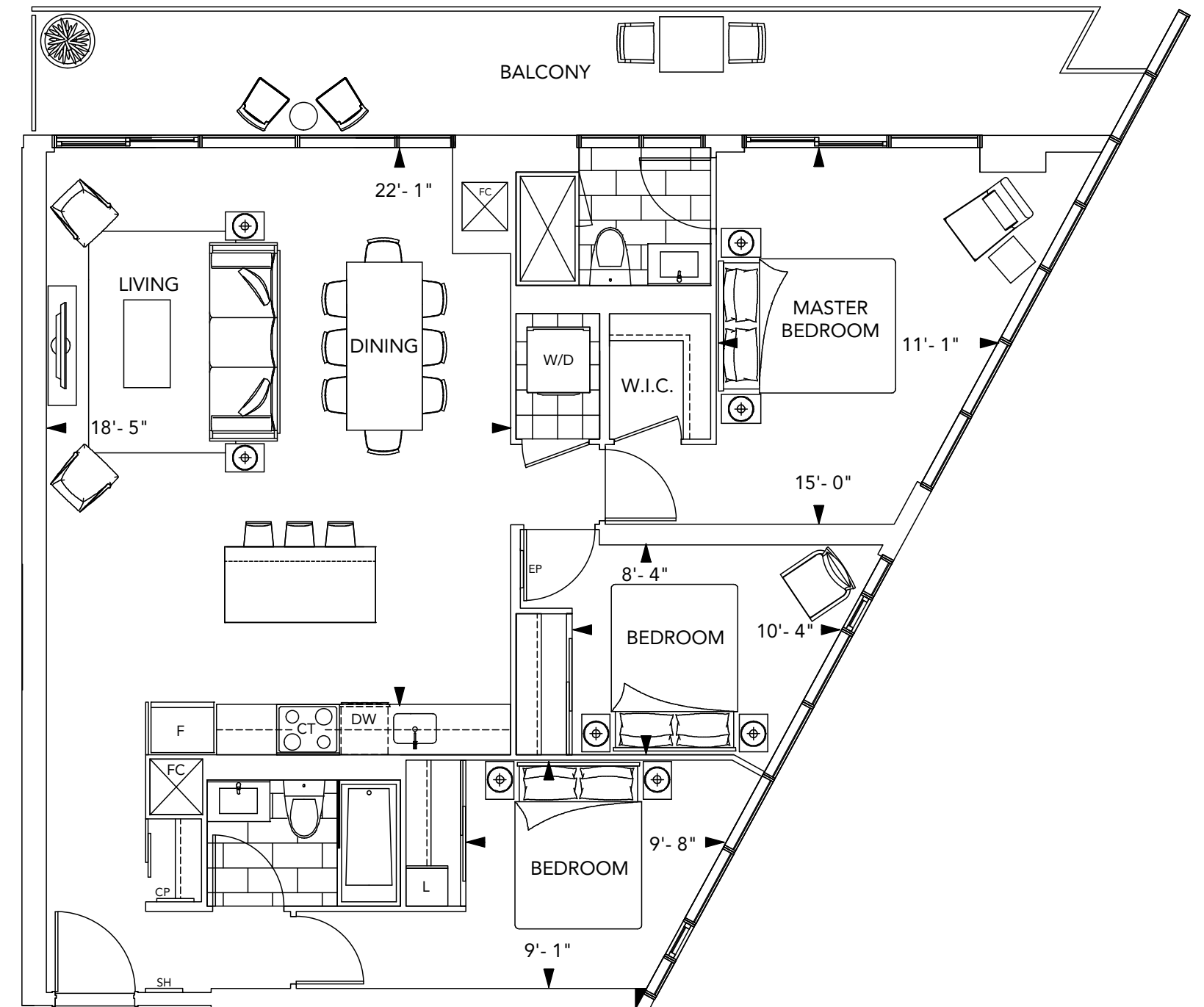
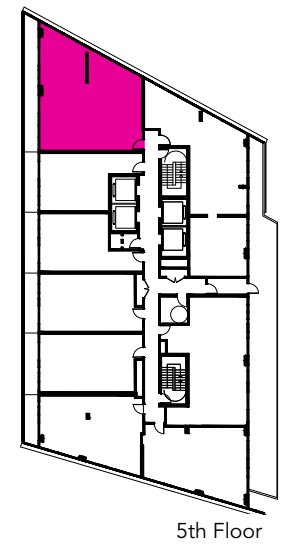
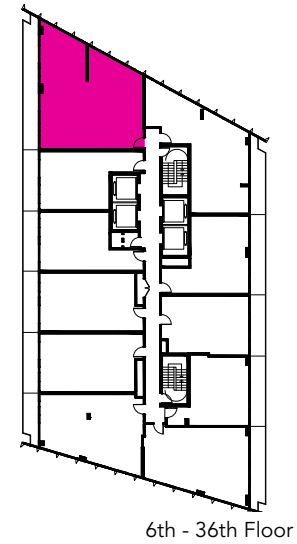
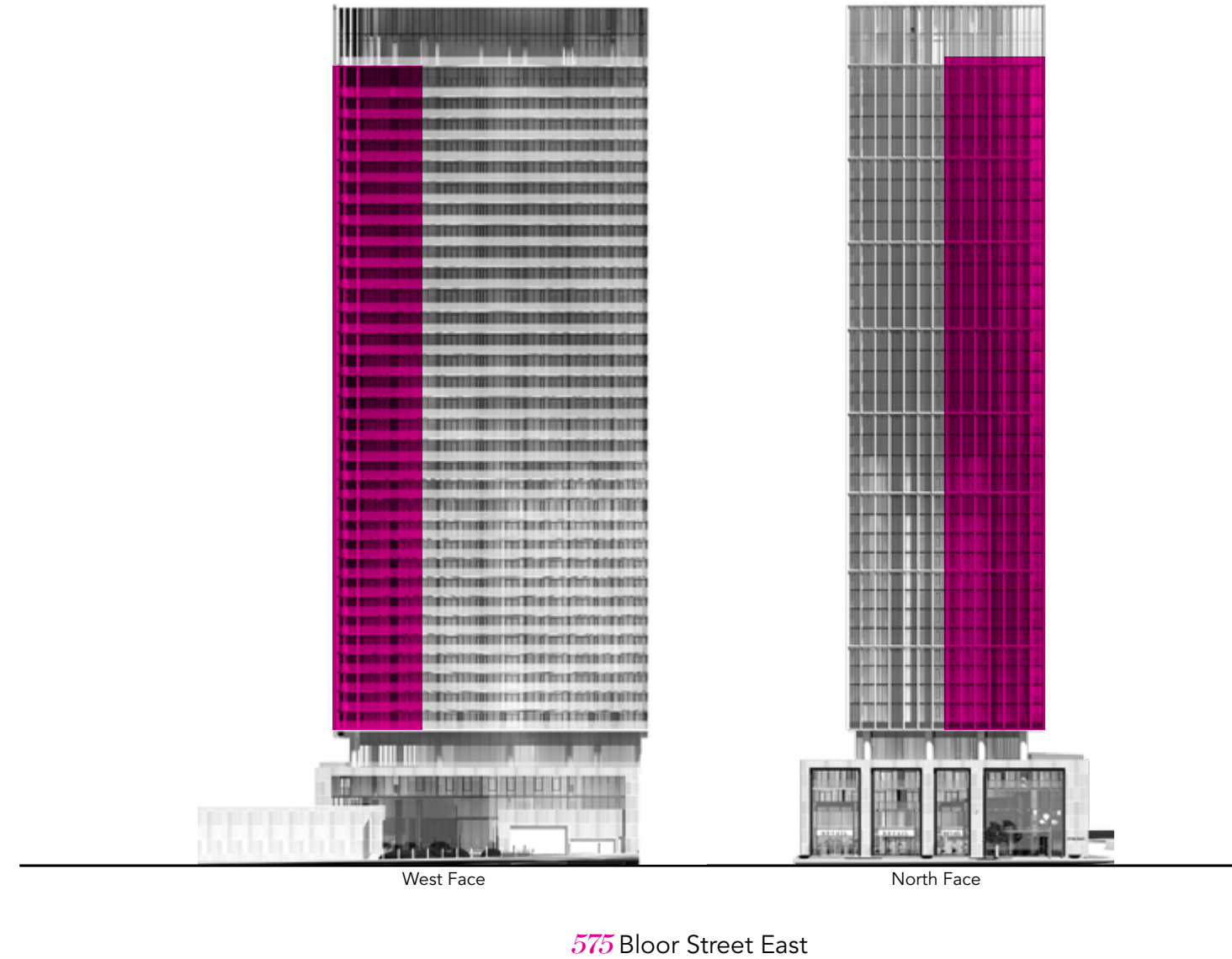
Suite 2C
2 Bedroom



All dimensions are approximate and subject to normal construction variances. Dimensions may exceed the useable floor area. Sizes and specifications subject to change without notice. Furniture is displayed for illustration purposes only and does not necessarily reflect the electrical plan for the suite. Suites are sold unfurnished. E.&O.E. ©Tridel 2016. ©Tridel, "D" design, Tridel Built for Life, Tridel Built for Life Design, and Built Green. Built for Life are registered Trademarks of Tridel Corporation. Project names and logos are Trademarks of their respective owners. All rights reserved. E.&O.E. January 2017.

Suite 3A

3 Bedroom



All dimensions are approximate and subject to normal construction variances. Dimensions may exceed the useable floor area. Sizes and specifications subject to change without notice. Furniture is displayed for illustration purposes only and does not necessarily reflect the electrical plan for the suite. Suites are sold unfurnished. E.&O.E. ©Tridel 2016. ©Tridel, "D" design, Tridel Built for Life, Tridel Built for Life Design, and Built Green. Built for Life are registered Trademarks of Tridel Corporation. Project names and logos are Trademarks of their respective owners. All rights reserved. E.&O.E. January 2017.